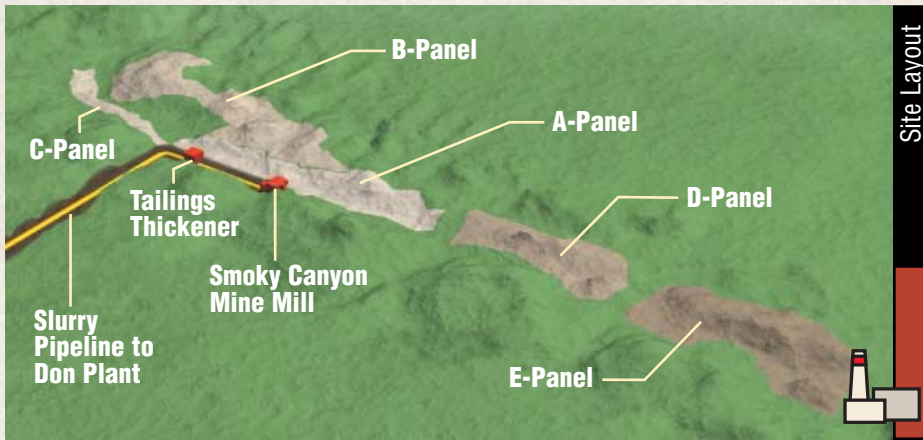


Smoky Canyon Mine



The Smoky Canyon Mine

The Smoky Canyon Mine is located in the rugged highlands of the Caribou National Forest, approximately 20 miles from Afton, Wyoming. Operations at Smoky Canyon consist primarily of open-pit mining for phosphate ore, milling the ore into a fine powder, then mixing the powdered ore with water to create a slurry. The ore slurry is transported via an 87-mile underground pipeline to Pocatello, Idaho, where it is manufactured into fertilizer at Simplot's Don Plant. Because of the steep terrain and elevation changes along the route, the pipeline is re-pressurized at Conda, Idaho, near Soda Springs. The Smoky Canyon Mine produces over 2 million tons of phosphate ore annually.

Local Economic Benefits

Annually, the J.R. Simplot Company spends approximately \$22 million in local communities for goods and services such as diesel fuel, large equipment parts and repair, tires, restaurants and caterers. In addition, \$18.2 million is channeled annually into the economies of local

communities – primarily Afton, Wyoming, and Soda Springs, Idaho – through employee salaries, wages, and benefits.

Consumer Benefits

All of the ore mined at Smoky Canyon is sent to the Pocatello Don Plant for use in fertilizer production. Fertilizers help replace lost or missing nutrients in soil, thereby promoting stronger plants. In turn, organic matter is increased, root systems are strengthened, and soil is less

susceptible to wind and water erosion. When erosion is lessened, the threat of contamination to rivers and streams is also reduced. In addition, the slurry pipeline used to transport ore to the Don Plant minimizes impact on the surrounding environment compared to other means of transportation.

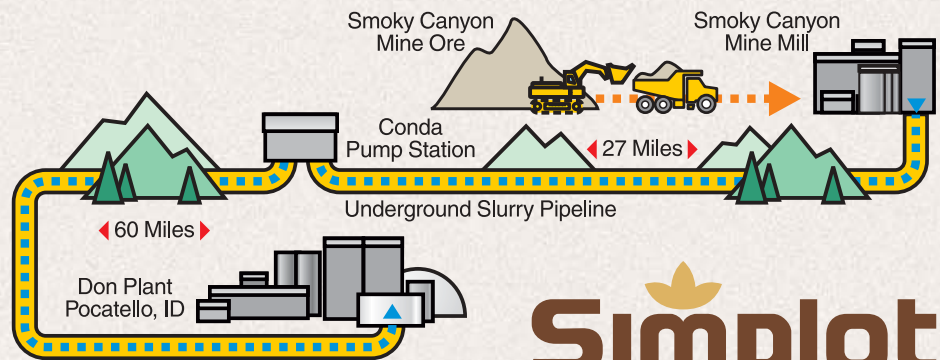
Safety and Environmental Record

The management and employees of the Smoky Canyon facility are committed to maintaining a safe, secure worksite for themselves and the surrounding communities. Broad-based efforts are made at the facility to continually meet and exceed safety goals. Lands are reclaimed by close work with the United States Forest Service, Bureau of Land Management, and other state and federal regulatory agencies to minimize and mitigate environmental impacts.

Raw Materials Used

The Smoky Canyon facility uses only phosphate rock and water to produce the ore slurry for shipment to the Don Plant.

How We Mine Phosphate Ore



Bringing Earth's Resources to Life



Smoky Canyon Mine



Simplot Mining & Manufacturing SYSTEM OVERVIEW

History

The Smoky Canyon Mine, which is located near the Idaho-Wyoming border, was developed in 1983, following depletion of ore reserves at J.R. Simplot Company's Conda Mine. Mining, milling, and shipping began at Smoky Canyon in 1984. The Smoky Canyon Mine is now the sole supplier of phosphate ore to the Don Plant fertilizer manufacturing facility near Pocatello, Idaho. During regular operations The Smoky Canyon Mine employs an average of 200 people in a range of operations, maintenance and management positions.

Products

Once phosphate rock has been ground to a texture similar to flour, an ore slurry is

produced by mixing the ore powder with water. The slurry is then pumped 87 miles to the Don Plant through the underground slurry pipeline.

Other facilities in the Mining & Manufacturing Group and the principal products they produce include:

Don Plant – Pocatello, Idaho

- Dry and Liquid Phosphate and Nitrogen Fertilizers
- Feed Phosphates
- Purified Phosphoric Acid

Lathrop, California

- Ammonium Phosphates
- Feed Phosphates
- Ammonium Sulfate
- Ammonium Hydroxide
- Sulfuric Acid

It's A Fact



It would take a train 3.8 miles long, with 420 cars, to move the same amount of concentrated phosphate ore sent through the Smoky Canyon-to-Don Plant pipeline each week.

Helm, California

- Liquid Ammonium Nitrates
- Nitric Acids
- Calcium Ammonium Nitrate
- Urea Ammonium Nitrate
- Liquid Ammonium Phosphate

SF Phosphates – Vernal, Utah and Rock Springs, Wyoming

- Phosphoric Acid (54%)
- Super Phosphoric Acid (68%)
- MAP (Monoammonium Phosphate), a dry, granulated fertilizer

Overton, Nevada

- Silica Sand: AFS grades 55, 60, 70, and 100

Brandon, Manitoba, Canada

- Nitrogen Fertilizers
- Ammonium Thiosulphate
- Phosphate Solution Fertilizers

Corporate Information

The Mining & Manufacturing Group is part of the J.R. Simplot Company, a privately held agribusiness company. With facilities throughout the western United States and Canada, the Mining & Manufacturing Group is focused on meeting the needs of its customers through the environmentally conscious extraction of natural resources, the manufacture of fertilizers that help make modern agriculture a miracle of productivity, and the distribution of the highest-quality agricultural products. Along with the rest of the J.R. Simplot Company, the employees of the Mining & Manufacturing Group recognize and embrace the responsibilities that fall to a company dedicated to *Bringing Earth's Resources to Life.*

J.R. Simplot Company – Smoky Canyon Mine

1890 Smoky Canyon Rd. • Afton, WY 83110 • 1-208-873-3700 • 1-208-873-3788 fax

www.simplot.com